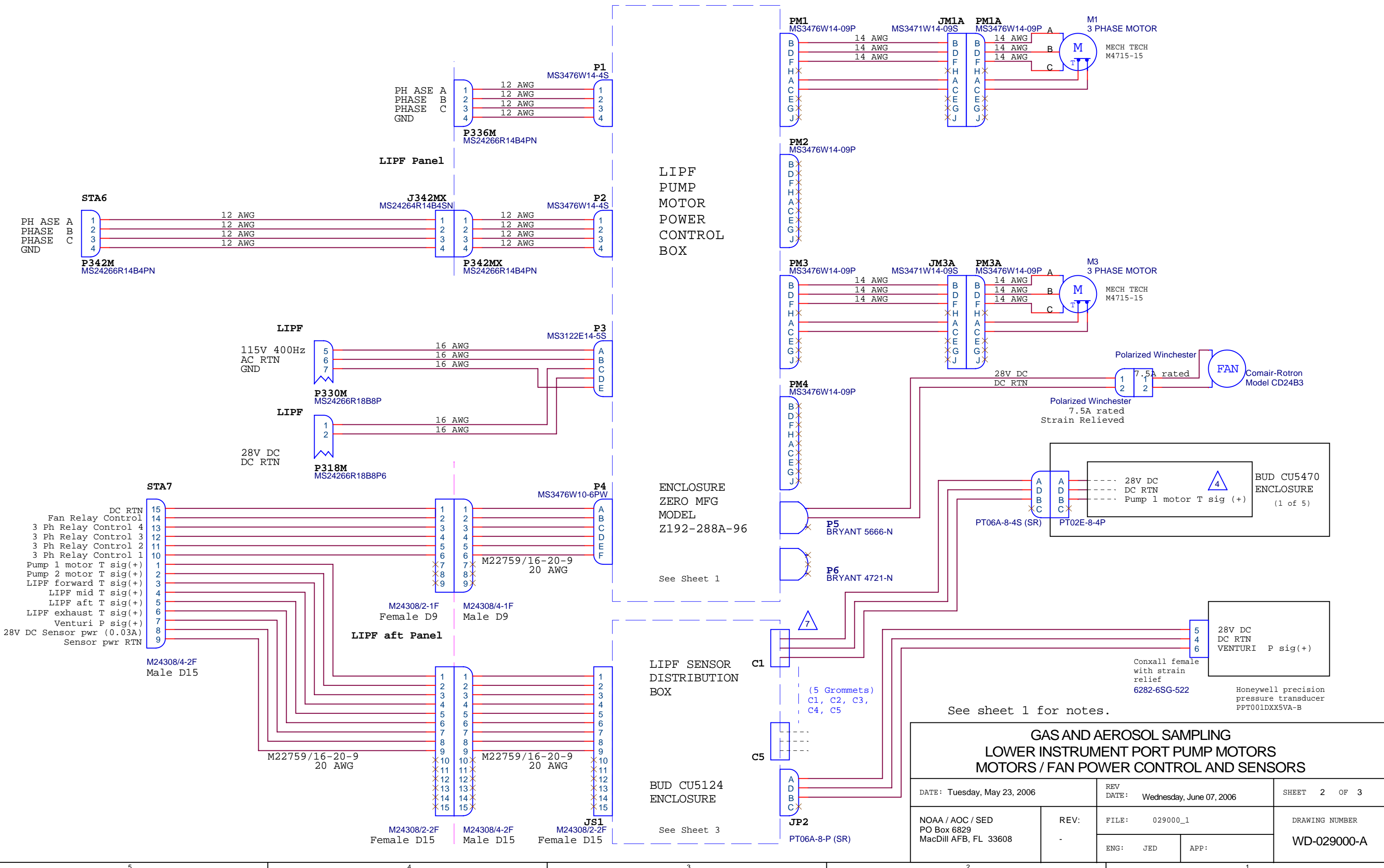


- NOTES:
1. All wire type M22759/16 or better (M22759/34 is preferred).
 2. All wire 20 AWG unless noted.
 3. See Sheet 2 for external cabling.
 4. LM35 temperature sensor (TO-92) cemented to interior of enclosure.

GAS AND AEROSOL SAMPLING LOWER INSTRUMENT PORT PUMP MOTORS MOTORS / FAN POWER CONTROL AND SENSORS			
DATE: Wednesday, May 17, 2006	REV DATE: Wednesday, June 07, 2006	SHEET 1 OF 3	
NOAA / AOC / SED PO Box 6829 MacDill AFB, FL 33608	REV: -	FILE: 029000_1	DRAWING NUMBER
	ENG: JED	APP:	WD-029000-A



See sheet 1 for notes.

GAS AND AEROSOL SAMPLING LOWER INSTRUMENT PORT PUMP MOTORS MOTORS / FAN POWER CONTROL AND SENSORS			
DATE: Tuesday, May 23, 2006	REV: -	REV DATE: Wednesday, June 07, 2006	SHEET 2 OF 3
NOAA / AOC / SED PO Box 6829 MacDill AFB, FL 33608	ENG: JED	FILE: 029000_1	DRAWING NUMBER WD-029000-A
		APP:	

LIPF PUMP MOTOR POWER CONTROL BOX

ENCLOSURE ZERO MFG MODEL Z192-288A-96

LIPF SENSOR DISTRIBUTION BOX

BUD CU5124 ENCLOSURE

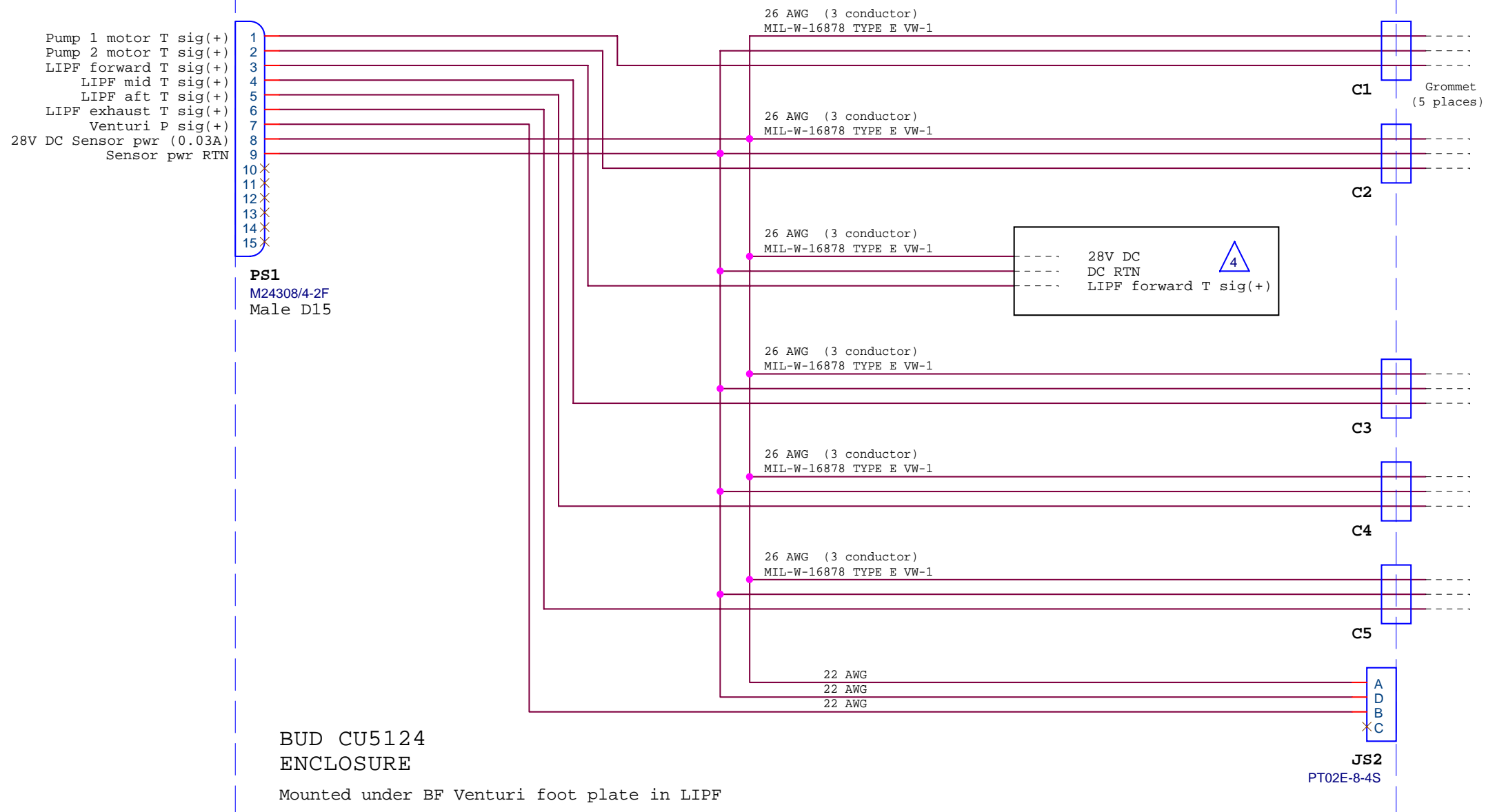
- DC RTN
- Fan Relay Control
- 3 Ph Relay Control 4
- 3 Ph Relay Control 3
- 3 Ph Relay Control 2
- 3 Ph Relay Control 1
- Pump 1 motor T sig(+)
- Pump 2 motor T sig(+)
- LIPF forward T sig(+)
- LIPF mid T sig(+)
- LIPF aft T sig(+)
- LIPF exhaust T sig(+)
- Venturi P sig(+)
- 28V DC Sensor pwr (0.03A)
- Sensor pwr RTN

28V DC
DC RTN
VENTURI P sig(+)

Conxall female with strain relief
6282-6SG-522

Honeywell precision pressure transducer
PPT001DXX5VA-B

LIPF SENSOR DISTRIBUTION BOX



See sheet 1 for notes.

GAS AND AEROSOL SAMPLING LOWER INSTRUMENT PORT PUMP MOTORS MOTORS / FAN POWER CONTROL AND SENSORS			
DATE: Tuesday, May 30, 2006	REV DATE: Wednesday, June 07, 2006	SHEET 3 OF 3	
NOAA / AOC / SED PO Box 6829 MacDill AFB, FL 33608	REV: -	FILE: 029000_1	DRAWING NUMBER
	ENG: JED	APP:	WD-029000-A