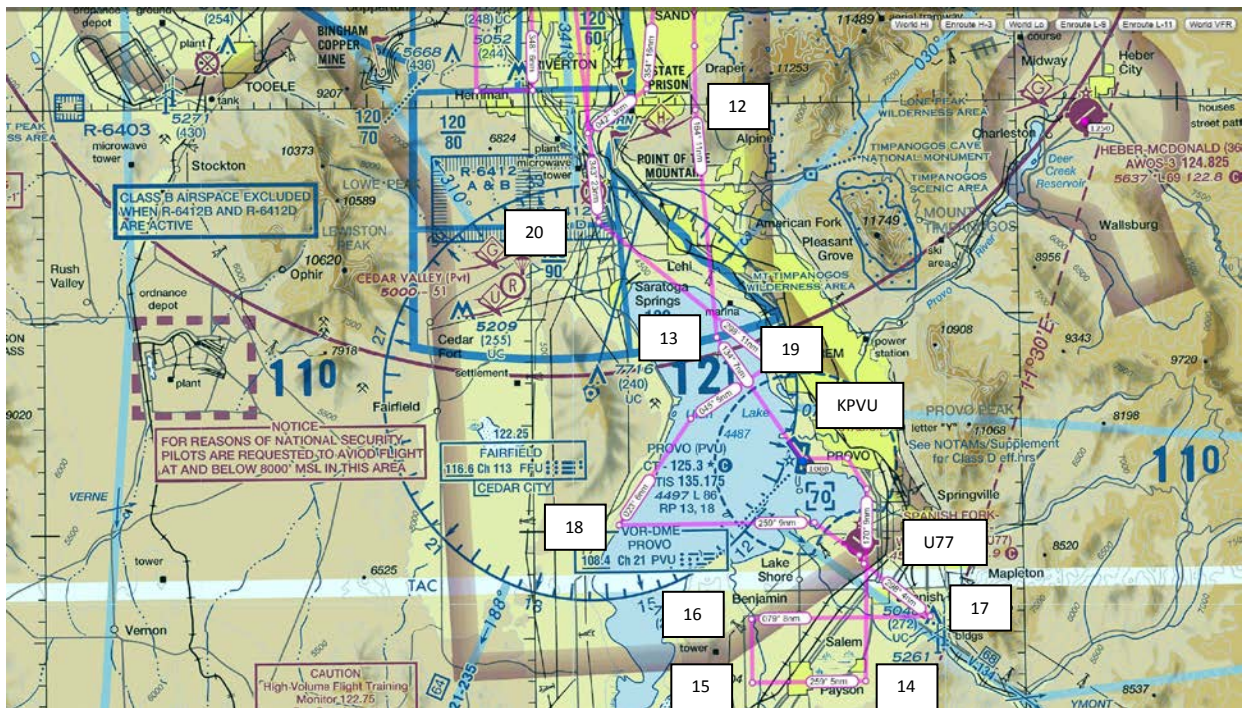
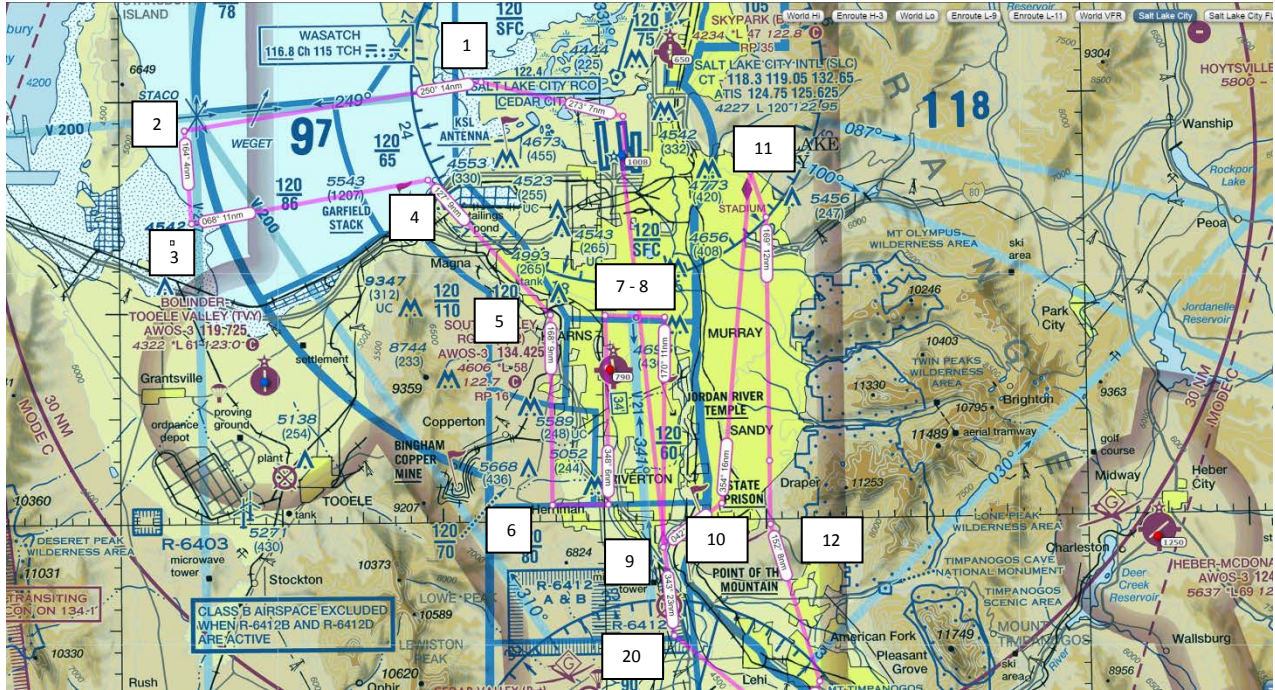


NOAA N48RF Utah Air Chemistry Project

Flight Plan 2

Salt Lake City to Provo



Waypoint	Lat/Lon	Alt AGL	Alt MSL
1	405051N1120724W	500	4700
2	404839N1122556W	500	4700
3	404415N1122531W	500	4700
4	404614N1121046W	500	4700
5	403947N1120314W	700	5400
6	403047N1115946W	700	5500
7	403944N1115950W	700	5300
8	403937N1115608W	700	5300
9	402844N1115624W	700	5500
10	403047N1115244W	700	5500
11	404628N1115041W	700	5500
12	402946N1114944W	6000	12500
13	401903N1114837W	6000	12500
KPVU	Low approach	100	4600
14	400246N1113947W	500	5100
15	400246N1114644W	500	5100
16	400546N1114644W	500	5100
17	400546N1113546W	1000	5800
U77	Low Approach	100	4600
18	401016N1115447W	500	5000
19	401748N1114510W	2000	7000
20	402433N1115547W	1000	6500
KSLC	Landing	0	4300