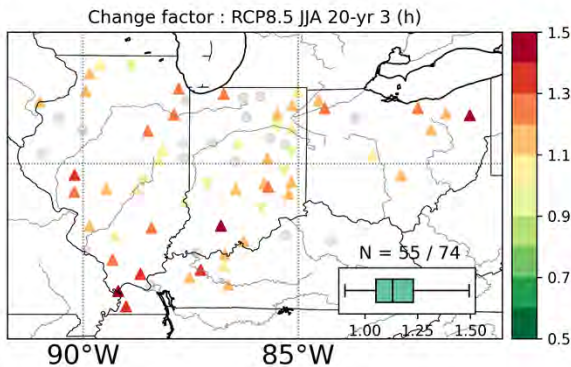
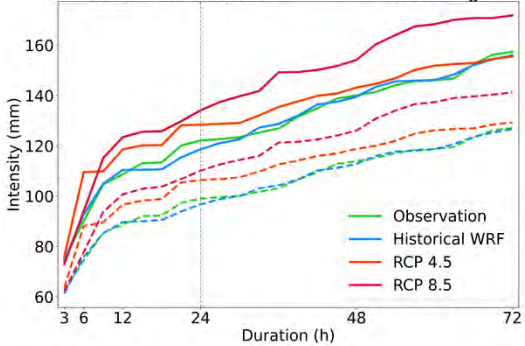


Return periods: 100-year (solid lines) & 20-year (dashed lines)
 Station : USC00124973
 Season : JJA



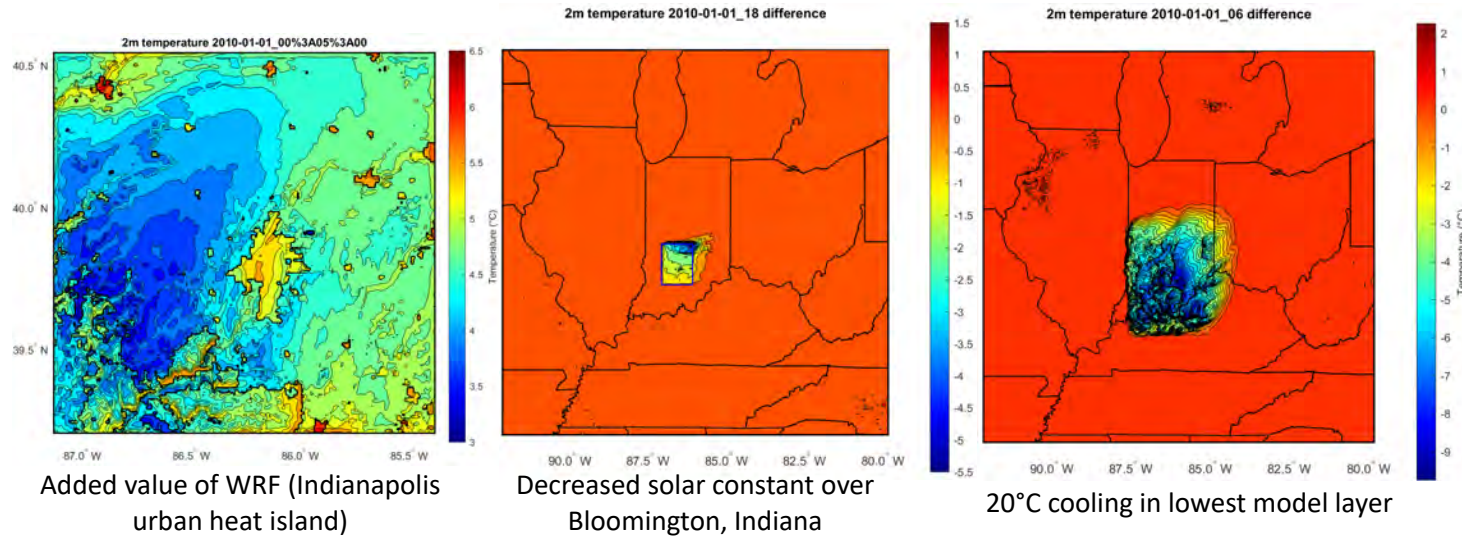
IDF curves (left) and change factors (right), focus on subdaily changes
 Created by Trung Nguyen

Dynamical Downscaling of SAI

1. Worth it? What's the added value?
2. If it is, what's the best way to represent SAI?

Simulations starting soon
 using CSU's setup (see
 Lantao's talk)

Coordinating with Simone
 for comparison with
 variable res CESM



Added value of WRF (Indianapolis
 urban heat island)

Decreased solar constant over
 Bloomington, Indiana

20°C cooling in lowest model layer

Figures created by Tony Li

